

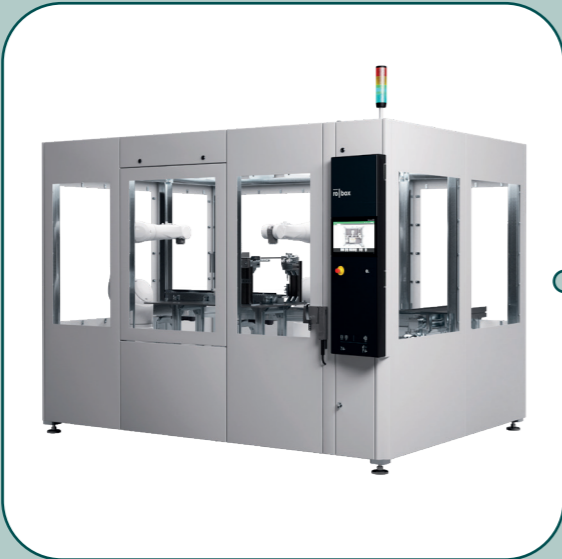
baumann  
**ro | box**



# DESIGNS FOR MORE MODULARITY



Protective fence cell

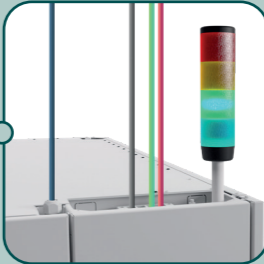


Floor-mounted design

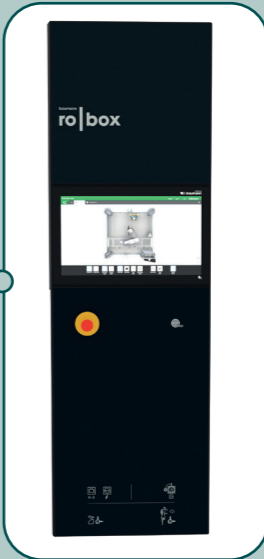


Tabletop design

## FEATURES



Electrics & pneumatics



Baumann User Interface

## HIGHLIGHTS

### FLEXIBLE COMBINATIONS

- Tabletop design
- Floor-mounted design
- Protective fence cell

### SPECIALISED CELL VERSION

- Clean room
- Laser

## ADDITIONAL FEATURES



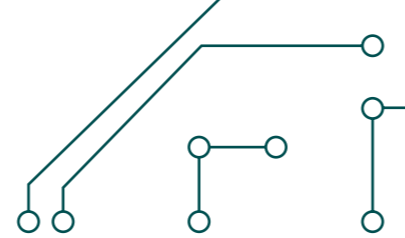
### MOBILE SETUP PANEL

- 10" touchscreen
- Plug & play on every Baumann V10 cell
- Emergency stop/dead man button
- Application: Commissioning & service
- Available as options



### SOFTWARE

- Remote maintenance
- Connectivity
- Standardised window for display
- Cell status displayed in detail
- Plug & play dead man button or mobile panel
- TwinSAFE with user FBs: Fast integration of robots, axes, enabling switches, etc.
- Optional stepping mode up to a defined stop position



## VARIABLE LOADING SYSTEMS



Belt technology



box|loader

### ADDITIONAL LOADING SYSTEMS

- Stack tray handler
- Vibratory bowls
- and much more



Stack tray handler

### FEED MODULES

- Tray magazines
- Drawers
- Bulk material feeds
- Tape & reel feeder
- Blister feeders
- and much more

### WORKPIECE TRANSPORT

- Workpiece carrier transport system
- Rotary indexing table
- Circuit board conveyor
- Part transport even without work-piece carrier
- and much more



Cart module

## PRODUCT CHARACTERISTICS

### Grid dimension and cell sizes

- Grid dimension 200 mm
- Smallest cell 1000 x 1000 mm
- Largest single cell in tabletop design  
2400 x 2000 mm
- Largest single cell in floor design  
3200 x 2400 mm
- Can be combined with add-on cells for flexible scaling
- Stand-alone or inline

### Robot

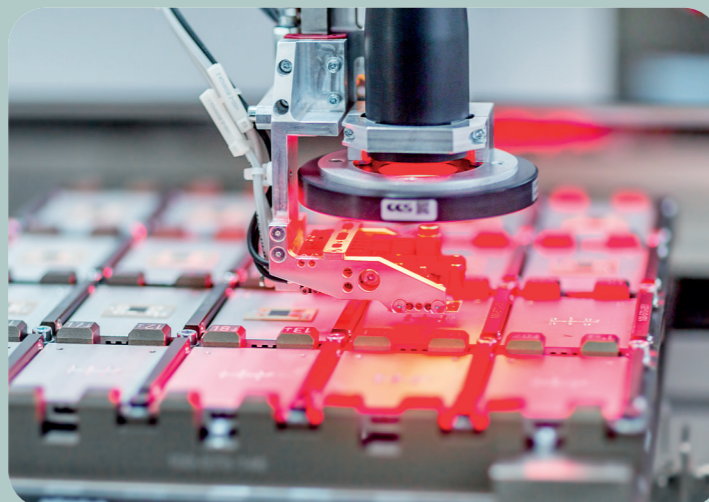
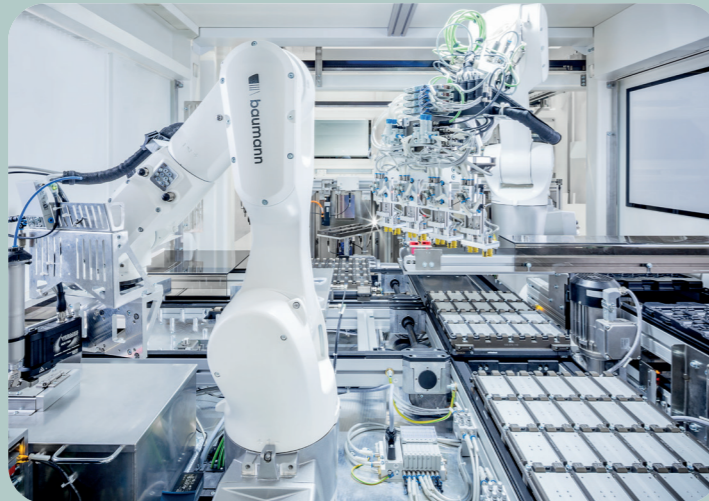
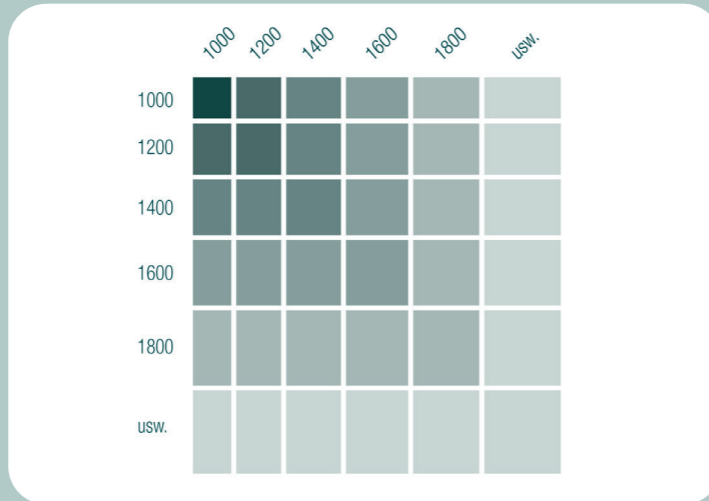
- Scara
- 6-axis
- Cartesian systems

### Process modules

- Assembling
- Tipping
- Joining
- Riveting
- Bonding
- Dispensing
- Laser welding
- Hot riveting
- Depaneling
- and much more

### Test modules

- Mechanical and electrical test modules
- Test modules for circuit boards
- Optical test systems
- Modules for component measurement
- Modules for tests at temperature
- Tightness test



# THE PLATFORM FOR YOUR FLEXIBLE AUTOMATION PROCESSES

An innovative standardised platform for robot applications, the baumann ro|box is set apart by its high flexibility, scalability and short delivery and setup times.

## APPLICATIONS

The main applications are handling and assembly tasks. The intelligent cell system is setting standards in the mechanical and electrical engineering sectors.

## SIZES & ROBOTICS

The grid size (200 mm) configuration function is available either stand-alone or inline and allows the use of SCARA, articulated arm and Cartesian robots as well as axis systems. For large-scale robotics, a floor-mounted solution is also available.

## MODULARITY

A high degree of modularity and adaptability is also achieved through flexible scalability of cell designs such as the tabletop and floor-mounted versions and the protective fence cell.

## CELL VERSIONS

The cells are available as clean room, laser and other cells to guarantee the high cleanliness standards requirements, in the automotive or pharmaceutical industries for example.

## CELL CONSTRUCTION

The steel construction, the high dead weight and the rigidity of the frame ensure optimal damping of vibrations of the robot's movements and permit the highest processing speeds. The cell can be supplied ESD-capable, is fully enclosed and based on

a continuous, tested emergency stop and safety concept.

## PLUG & PLAY

Besides the quick and easy setup, predefined interfaces to mechanical, electrical and pneumatic mechanisms in the corner columns also provide convenient expansion options. Feed modules, add-on modules and other cells can be coupled easily and directly. The swivelling control panels can be mounted on either side of the cell and make for easy operation from both sides.

## FLEXIBILITY

Together with the ro|box software, the Baumann ro|box is the perfect combination of standardisation and individualisation for your particular application.

The key advantages include flexibility, the option to expand into complex production lines, scalability and short delivery times. Our compact robot cells offer optimum access, practically full availability and fast changeover.



[baumann-automation.com](http://baumann-automation.com)



@Baumann GmbH



@baumannautomation

## CONTACT

Baumann GmbH • Oskar-von-Miller-Str. 7 • 92224 Amberg  
Tel.: +49 9621 6754-0 • [info@baumann-automation.com](mailto:info@baumann-automation.com)

